



BLUE-MASTER[®]
by *CE/ESA*



POINTS
& CHISELS

POINTS AND CHISELS FOR ELECTROPNEUMATIC MACHINES

SDS
Plus

Points & chisels

Grey



P02140



P02250



C02140



C02250



CV02250



R02250



CA02140



CA02250



CZ02250



RA02250



SDS PLUS

	WIDTH mm	LENGH. mm	€
--	-------------	--------------	---

POINT

P02140	-	140	9,64
P02250	-	250	15,37

CHISEL

C02140	20	140	9,64
C02250	20	250	15,37

CHISEL (low vibration)

CV02250	20	250	19,48
---------	----	-----	-------

CHASING GOUGE

R02250	22	250	31,18
--------	----	-----	-------

WIDE CHISEL

CA02140	40	140	12,04
CA02250	40	250	26,48
CA06250	60	250	42,08

TILE CHISEL

CZ02250	40	250	42,53
---------	----	-----	-------

CHASING GOUGE WITH GLIDES

RA02250	22	250	90,76
---------	----	-----	-------

STICKING PICKET TOOL

PIPLUS1/2	1/2 = 12,7	170	51,25
PIPLUS5/8	5/8 = 15,87	170	53,36

POINTS AND CHISELS FOR ELECTROPNEUMATIC MACHINES



SDS MAX

	WIDTH mm	LENGTH. mm	€
--	-------------	---------------	---

POINT

P01280	-	280	20,09
P01400	-	400	20,51
P01600	-	600	32,55



P01400

POINT (low vibration)

PR01400	-	400	38,26
PRR1400	-	400	41,20



PR01400



PRR1400

POINT PRH (low vibration)

PRH1400	-	400	41,89
---------	---	-----	-------



PRH1400

CHISEL

C01280	25	280	20,03
C01400	25	400	20,40
C01600	25	600	32,46



C01400

CHISEL (low vibration)

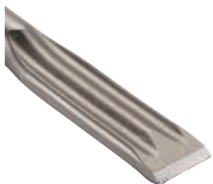
CR01400	25	400	39,79
---------	----	-----	-------



CR01400

CHISEL (low vibration)

CH01400	25	400	41,89
---------	----	-----	-------



CH01400

POINTS AND CHISELS FOR ELECTROPNEUMATIC MACHINES

SDS MAX

	WIDTH mm	LENGTH. mm	€
--	-------------	---------------	---

WIDE CHISEL

C0150	50	400	38,44
C0175	75	300	50,48
C01115	115	350	100,18

TILE CHISEL

CZ0150	50	300	60,77
--------	----	-----	-------

BRICK RAKING CHISEL

CM0110	8	300	72,19
--------	---	-----	-------

BUSH HAMMER

BU45	45	250	221,56
------	----	-----	--------

MORTAR CHISEL

CD0132	32	280	93,78*
--------	----	-----	--------

TCT MORTAR CHISE

CMD0132	38	280	214,53*
---------	----	-----	---------

*Until end of stock

STICKING PICKET TOOL

PI5/8	5/8 = 15,87	250	58,32
PI3/4	3/4 = 19,05	250	61,25
PI1	1=25,40	250	64,36

SDS
Max

Points & chisels

Grey



C0175



CZ0150



CM0110



BU45



CD0132



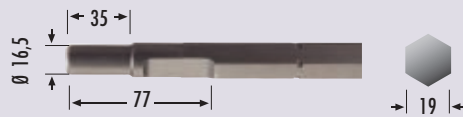
CMD0132



POINTS AND CHISELS FOR ELECTROPNEUMATIC MACHINES

BOSCH

Ø 16,5



P05300



C05300



CA05300



R05300

BOSCH 19 - Ø 16,5 mm

	WIDTH mm	LENGH. mm	€
--	-------------	--------------	---

POINT

P05300	-	300	45,02*
P05400	-	400	53,92
P05600	-	600	67,07

CHISEL

C05300	25	300	45,02
C05400	25	400	63,43

WIDE CHISEL

CA05300	50	300	56,28
CA0575	75	300	63,49

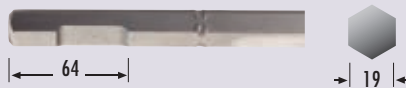
CHASING GOUGE

R05300	25	300	85,81*
--------	----	-----	--------

*Until end of stock

BOSCH

19



P04400



C04300



CA04300



R04300

BOSCH 19 mm

	WIDTH mm	LENGH. mm	€
--	-------------	--------------	---

POINT

P04400	-	400	39,91
P04600	-	600	53,00

CHISEL

C04300	25	300	40,26*
C04400	25	400	42,12
C04600	25	600	54,69

WIDE CHISEL

CA04300	50	300	79,01
CA04450	50	450	81,82

CHASING GOUGE

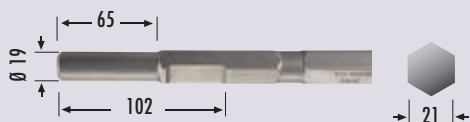
R04300	25	300	118,17*
--------	----	-----	---------

*Until end of stock

POINTS AND CHISELS FOR ELECTROPNEUMATIC MACHINES

Points & chisels

Grey

KANGO
Ø 19
21

P06400



C06400



CA06400



R06300



KANGO 21 - Ø 19 mm

	WIDTH mm	LENGTH. mm	€
--	-------------	---------------	---

POINT

P06400	-	380	54,11
P06450	-	460	63,04
P06600	-	600	82,62

CHISEL

C06400	25	380	54,11
C06450	25	460	59,26
C06600	25	600	73,73

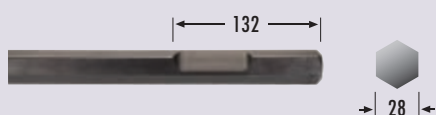
WIDE CHISEL

CA06400	50	400	116,66
CA0675400	75	400	124,43

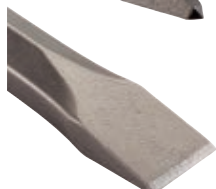
CHASING GOUGE

R06300	33	300	98,08*
--------	----	-----	--------

*Until end of stock

BOSCH
28

P07400



C07400



BOSCH 28 mm

	WIDTH mm	LENGTH. mm	€
--	-------------	---------------	---

POINT

P07400	-	400	62,61
P07450	-	450	94,64

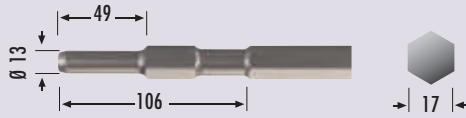
CHISEL

C07400	33	400	64,63
--------	----	-----	-------



POINTS AND CHISELS FOR ELECTROPNEUMATIC MACHINES

MAKITA
Ø 13
17



MAKITA **17 - Ø 13 mm**

	WIDTH mm	LENGTH. mm	€
--	-------------	---------------	---

POINT

P10280	-	280	42,55
P10450	-	450	53,55

CHISEL

C10280	22	280	50,04
C10450	22	450	56,73

WIDE CHISEL

CA10280	50	280	115,03
---------	----	-----	--------

MAKITA Ø
24
30



MAKITA **30 - Ø 24 mm**

	WIDTH mm	LENGTH. mm	€
--	-------------	---------------	---

POINT

P11410	-	410	65,39
P11550	-	700	133,24

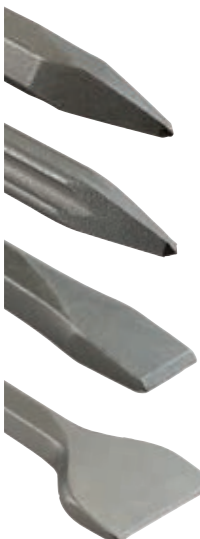
CHISEL

C11410	30	410	67,06
--------	----	-----	-------

WIDE CHISEL

CA1175	75	410	91,19
CA1125	125	400	208,69

HILTI
22



HILTI **22**

	WIDTH mm	LENGTH. mm	€
--	-------------	---------------	---

POINT

P21360	-	360	32,81
P21500	-	500	48,82

POINT (low vibration)

PR21360	-	360	62,84
---------	---	-----	-------

CHISEL

C21360	28	360	30,61
C21500	28	500	48,69

WIDE CHISEL

CA21360	80	360	75,73
CA21500	80	500	77,16

POINTS AND CHISELS FOR PNEUMATIC MACHINE
HEX.
22


P17450



C17450

HEXAGONAL 22 x 82 mm

	WIDTH mm	LENGTH. mm	€
--	-------------	---------------	---

POINT

P17450	-	450	43,87
P171000	-	1000	114,43

CHISEL

C17450	30	450	43,87
--------	----	-----	-------

HEX.
25


P18500



C18500

HEXAGONAL 25 x 108 mm

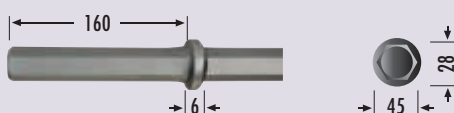
	WIDTH mm	LENGTH. mm	€
--	-------------	---------------	---

POINT

P18500	-	500	61,04
--------	---	-----	-------

CHISEL

C18500	30	500	61,04
--------	----	-----	-------

HEX.
28


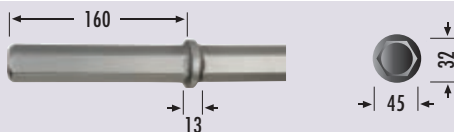
P19550

HEXAGONAL 28 x 160 mm

	WIDTH mm	LENGTH. mm	€
--	-------------	---------------	---

POINT

P19550	-	550	85,83
--------	---	-----	-------

HEX.
32


P20550

HEXAGONAL 32 x 160 mm

	WIDTH mm	LENGTH. mm	€
--	-------------	---------------	---

POINT

P20550	-	550	101,08
--------	---	-----	--------