

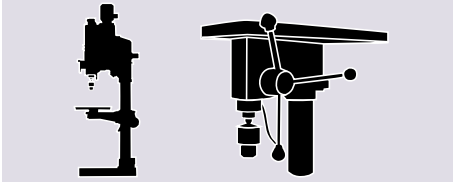


BLUE-MASTER[®]
by *celespa*



MANDRINI

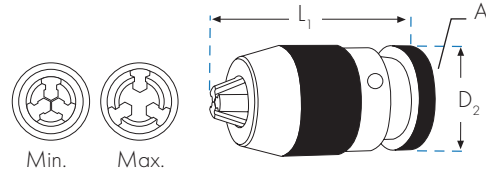
MANDRINI INDUSTRIALI PER TRAPANI A COLONNA O CNC



PREC.
<0,05

Ref. DC1

ALTA PRECISIONE

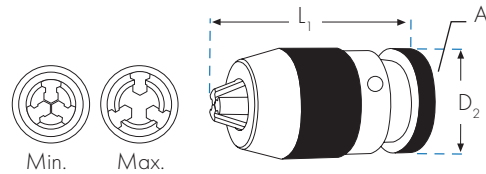


DC1						
	PRECISIONE mm	Min.-Max. mm	A	D2 mm	L1 mm	€
DC1-20-B22	<0,05	5-20	B22	58	130	206,12

PREC.
<0,20

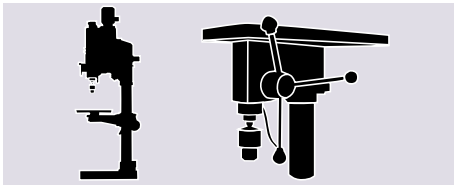
Ref. DC3

INDUSTRIALE LEGGERO

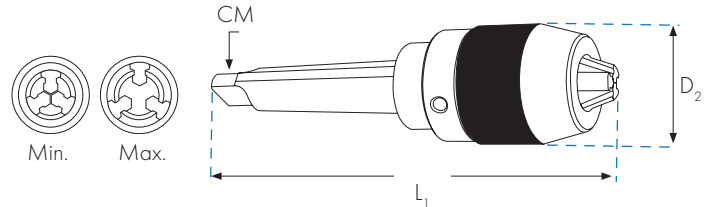


DC3						
	PRECISIONE mm	Min.-Max. mm	A	D2 mm	L1 mm	€
DC3-13-B16	<0,20	1-13	B16	43	94	77,62
DC3-13-3/8	<0,20	1-13	3/8-24 UNF	43	94	77,62
DC3-13-1/2	<0,20	1-13	1/2-20 UNF	43	94	77,62
DC3-16-B16	<0,20	1-16	B16	48	119	120,48
DC3-16-B18	<0,20	1-16	B18	48	119	120,48

MANDRINI INDUSTRIALI CON CODOLO CONICO PER TRAPANI A COLONNA O CNC

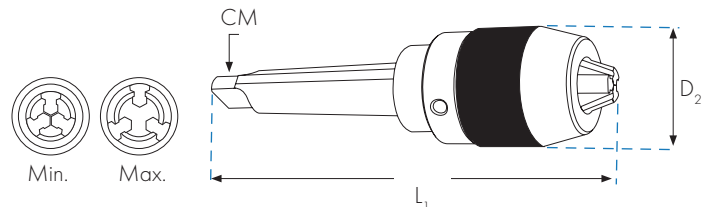


PREC. <0,05 Ref. DC10 **ALTA PRECISIONE**



DC10						
	PRECISIONE mm	Min.-Max. mm	CM	D2 mm	L1 mm	€
DC10-13-CM3	<0,05	1-13	CM3	51	192	264,23
DC10-13-CM4	<0,05	1-13	CM4	51	218	266,79
DC10-16-CM3	<0,05	1-16	CM3	56	207	270,16

PREC. <0,12 Ref. DC11 **INDUSTRIALE**



DC11						
	PRECISIONE mm	Min.-Max. mm	CM	D2 mm	L1 mm	€
DC11-13-CM2	<0,12	1-13	CM2	51	174	159,55
DC11-13-CM3	<0,12	1-13	CM3	51	192	159,55
DC11-13-CM4	<0,12	1-13	CM4	51	218	159,55
DC11-16-CM3	<0,12	1-16	CM3	56	207	187,07

CHIAVE PERNO PER MANDRINO DC11



NEW

DC20				
	Min.-Max. mm	D2 mm	L1 mm	€
DC20-1	1-13	4-5	180	11,59
DC20-2	1-16	4-5	190	13,65

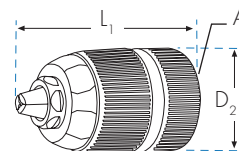
MANDRINI AUTOMATICI PROFESSIONALI

<950W

Ref. DC4



- Bloccaggio automatico.
- Corpo in plastica.
- Per trapano sia in modalità a rotazione sia a percussione.



						DC4
	W	Min.-Max. mm	A	D2 mm	L1 mm	€
DC4-13-1/2	<950	1,5-13	1/2-20 UNF	43	75	47,46
DC4-13-1/2-SDS	<950	1,5-13	1/2-20 UNF	43	75	54,75

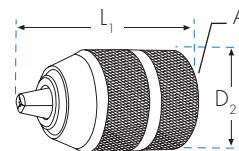
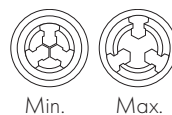
Ref. DC4-13-1/2-SDS

<1050W

Ref. DC5



- Bloccaggio automatico.
- Corpo in metallo.
- Alta potenza.
- Ganasce speciali per alto rendimento.
- Per trapano sia in modalità a rotazione sia a percussione.



						DC5
	W	Min.-Max. mm	A	D2 mm	L1 mm	€
DC5-13-1/2	<1050	1,5-13	1/2-20 UNF	43	75	55,42
DC5-13-SDS	<1050	1,5-13	1/2-20 UNF	43	75	63,64

Ref. DC5-13-SDS

<950W

Ref. DC13



- Si blocca ruotando il trapano ed esercitando una leggera pressione sul mandrino con la mano.
- Pensato per trapani leggeri a batteria.
- Corpo in plastica.



						DC13
	W	Min.-Max. mm	A	D2 mm	L1 mm	€
DC13-10-1/2	<950W	0,8-10	1/2-20 UNF	40	65	12,75

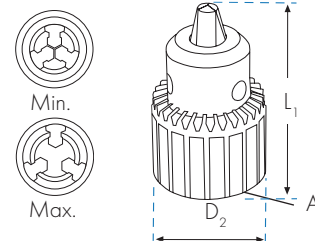
Ref. DC13-10-1/2

MANDRINI CON CHIAVE PROFESSIONALI

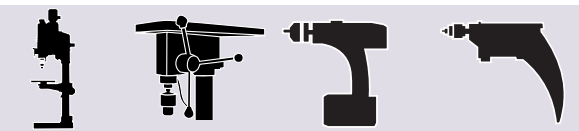


Ref. DC6

- Supporta la percussione, si consiglia l'uso in modalità a rotazione.
- Chiave inclusa



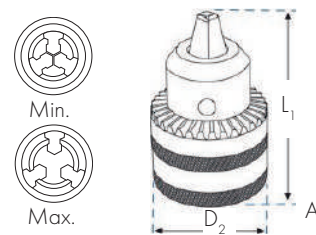
					DC6
	Min.-Max. mm	A	D2 mm	L1 mm	€
DC6-06-B10	0,5-6,5	B10	31	50	38,09
DC6-06-3/8	0,5-6,5	3/8-24 UNF	31	50	38,09
DC6-10-1/2	1-10	1/2-20 UNF	37	60	29,83
DC6-13-B12	1-13	B12	46	78	38,09
DC6-13-3/8	1-13	3/8-24 UNF	46	78	55,07
DC6-16-B16	1-16	B16	57	95	46,15
DC6-19-B22	5-20	B22	68	115	63,17



Ref. DC7

LEGGERO

- Per trapano sia in modalità a rotazione sia a percussione.
- Chiave inclusa



					DC7
	Min.-Max. mm	A	D2 mm	L1 mm	€
DC7-06-B10	0,6-6,5	B10	30	50	16,36
DC7-06-3/8	0,6-6,5	3/8-24 UNF	30	50	16,36
DC7-10-1/2	1,5-10	1/2-20 UNF	33	59	16,01
DC7-13-B12	1,5-13	B12	42	70	19,00
DC7-13-B16	1,5-13	B16	42	70	17,82
DC7-13-3/8	1,5-13	3/8-24 UNF	42	70	16,62
DC7-13-1/2	1,5-13	1/2-20 UNF	42	70	16,62
DC7-13-SDS	1,5-13	1/2-20 UNF	42	70	19,50
DC7-16-1/2	3-16	1/2-20 UNF	51	87	24,00

Ref. DC7-13-SDS

• Per le chiavi di ricambio per punte consultare la pagina 124

MANDRINO CON PROLUNGA FLESSIBILE

Ref. DC15-001

- Prolunga flessibile di 1050 mm.
- Mandrino automatico da Ø1 a 6 mm di capacità.
- Velocità massima di lavoro 6000 rpm.



DC15-001				
	Min.-Max. mm	D2 mm	L1 mm	€
DC15-001	1-6	30	1050	35,15

MANDRINO AD ANGOLO

Ref. DC15-002

- Indicato per lavorare in luoghi di difficile accesso.
- Uso esclusivo in modalità a rotazione.
- Mandrino automatico da Ø 1 a 10 mm di capacità.
- Design leggero. Include impugnatura per mancini e destri.



DC15-002				
	Min.-Max. mm	D2 mm	α	€
DC15-002	1-10	41	90°	20,58

MINI MANDRINO CODOLO ESAGONALE



P29

- Codolo 1/4 Esagonale
- Da 0,6 a 6,0 mm

18,48

SUPPORTO A COLONNA PROFESSIONALE PER TRAPANO

- Maniglia con molla di richiamo integrata (recupera la posizione in modo rapido, semplice e senza alcuno sforzo).
- Regola di controllo di forazione, 60 mm di profondità.
- Supporto a colonna professionale per trapano con Ø 43/38 mm.
- Base in ghisa grigia con guide per morsa di stringimento e fori per ancoraggio al banco da lavoro.
- Forazione precisa di superficie, pezzi da lavorare rotondi o listelli.

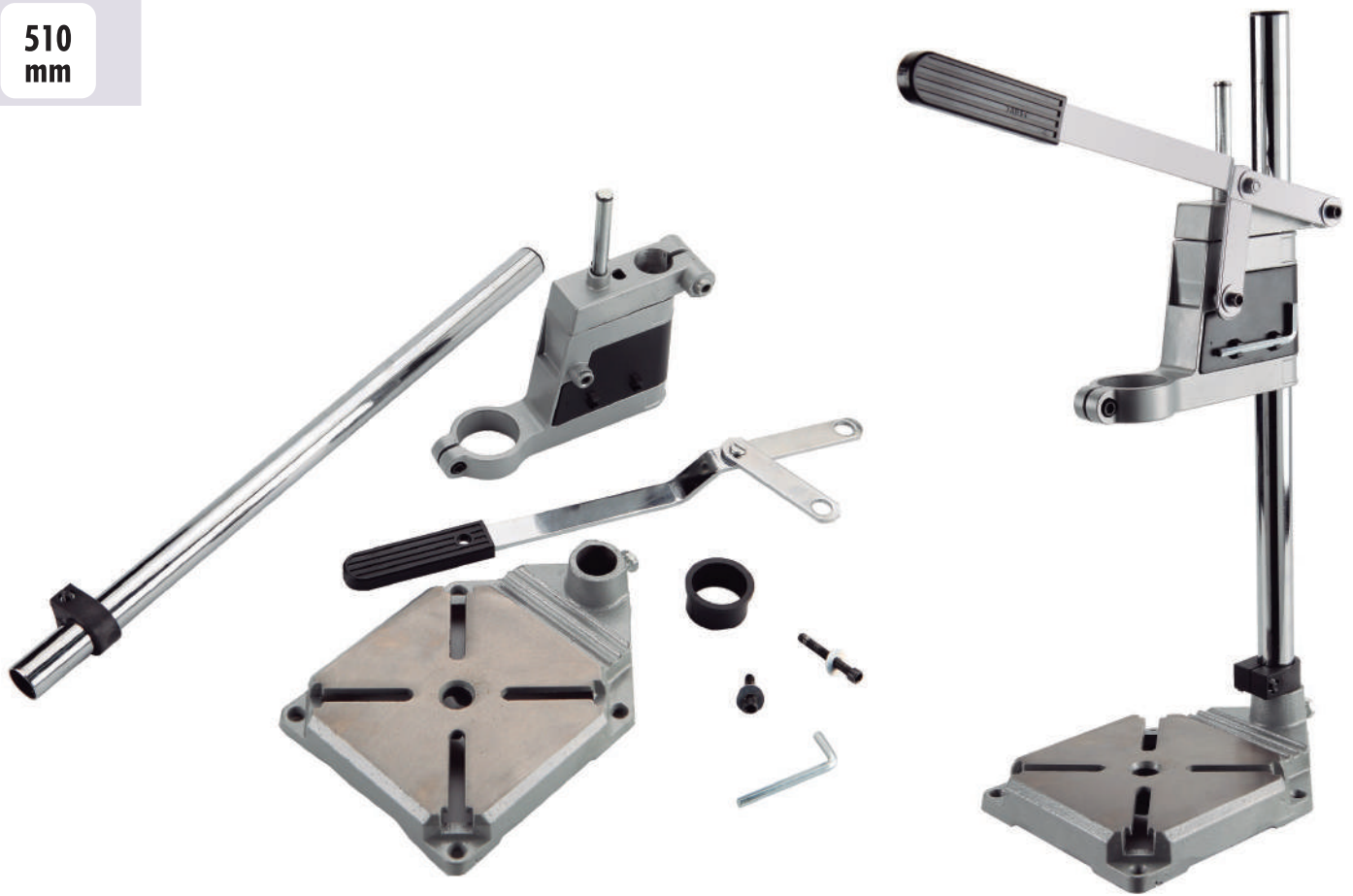
Ref. STE99

**43/38
mm**

**60
mm**

**510
mm**

				STE99
	Ø Attacco mm	Profondità forazione mm	Altezza mm	€
STE99	43/38	60	510	66,74



ACCESSORI PER PUNTE E MANDRINI

CHIAVI PER MANDRINI



	Min.-Max. mm	Ø mm	DC €
DC-10	1 - 10	6	4,55
DC-13	1 - 13	6	5,41
DC-16	1 - 16	8	6,73
DC-20	5 - 20	9	11,94



ADATTATORI SDS PLUS



	Filettatura (A)	DC €
DC -3/8	3/8 - 24 UNF	15,01
DC -1/2	1/2 - 20 UNF	15,01



ADATTATORE 1/4" ESAGONALE



	Codolo	Filettatura	DC-01 €
DC-01	1/4" Esag.	3/8 - 24 UNF	8,68

CONI RIDUTTORI

DIN
2185

CONO MORSE		L1 mm	CR €	
EST.	INT.		EST.	INT.
1	0	80	17,72	
2	1	92	17,72	
3	1	99	23,83	
3	2	112	24,31	
4	1	124	36,23	
4	2	124	34,03	
4	3	140	34,03	

CONO MORSE		L1 mm	CR €	
EST.	INT.		EST.	INT.
5	1	156	62,33	
5	2	156	56,89	
5	3	156	56,89	
5	4	171	61,18	
6	3	218	122,79	
6	4	218	139,32	
6	5	218	139,32	

CONI AUMENTATORI

DIN
2187

CONO MORSE		L1 mm	D1 mm	CA €	
EST.	INT.			EST.	INT.
1	2	160	30	39,22	
2	3	196	36	53,33	
3	4	240	48	89,95	
4	5	300	63	150,97	
5	6	415	80	445,46	

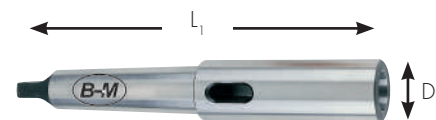
CONI RIDUTTORI ESTENSIVI

DIN
2187

CONO MORSE		L1 mm	CA €	
EST.	INT.		EST.	INT.
2	1	160	26,98	
3	1	175	37,51	
3	2	194	40,50	
4	1	200	56,79	
4	2	215	55,51	
4	3	240	58,09	
5	1	232	140,58	

CONO MORSE		L1 mm	CA €	
EST.	INT.		EST.	INT.
5	2	247	127,81	
5	3	268	110,52	
5	4	300	124,93	
6	3	330	270,07	
6	4	355	270,07	
6	5	390	272,04	

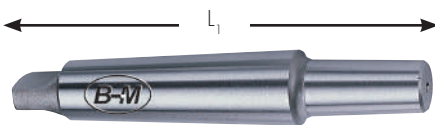
CONI ESTENSIVI



CONO MORSE		L1 mm	D1 mm	CA €	
EST.	INT.			EST.	INT.
1	1	145	20	26,98	
2	2	175	30	39,22	
3	3	215	36	59,40	
4	4	265	48	95,80	
5	5	335	63	206,71	
6	6	470	85	474,42	

ACCESSORI PER PUNTE E MANDRINI

ELEMENTI DI FISSAGGIO CONICI PER MANDRINI



ESTRATTORE PER ELEMENTI DI FISSAGGIO DI MANDRINI CON CONO STANDARDIZZATO B16 E B18



CMEXT
48,16 €

CM				CM			
CM	MANDRINI	L1 mm	€	CM	MANDRINI	L1 mm	€
1	B10	86	13,45	3	B22	147	25,18
1	B12	89	10,11	3	B24	157	32,42
1	B16	99	10,11	4	B16	158	22,50
1	B18	107	10,11	4	B18	166	23,10
2	B10	105	16,08	4	B22	176	41,53
2	B12	106	11,55	4	B24	186	42,01
2	B16	112	11,55	5	B16	193	85,07
2	B18	119	11,55	5	B18	200	85,07
2	B22	130	21,13	5	B22	208	85,00
3	B12	127	19,78	5	B24	221	92,32
3	B16	134	14,97	6	B22	240	173,61
3	B18	140	14,97				

ESTRATTORE CONO MORSE

ELEMENTI DI FISSAGGIO CONICI PER MANDRINI FILETTATI



CE			
N°	VALIDI CM	L1 mm	€
0	0	90	14,32
1	1 / 2	140	16,92
3	3	190	22,35
4	4	225	30,40
5	5 / 6	265	49,36

CMR				CMR			
	CM	A	€		CM	A	€
CMR1-3/8	1	3/8-24h	21,14	CMR2-5/8	2	5/8-16h	21,14
CMR1-1/2	1	1/2-20h	21,14	CMR3-3/8	3	3/8-24h	28,60
CMR2-3/8	2	3/8-24h	21,14	CMR3-1/2	3	1/2-20h	28,60
CMR2-1/2	2	1/2-20h	21,14	CMR3-5/8	3	5/8-16h	28,60

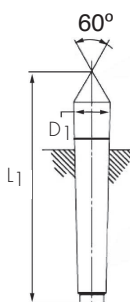
ACCESSORI PER PUNTE

CONTROPUNTE FISSE PER TORNI

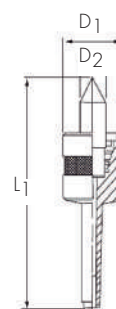
CONTROPUNTE ROTANTI PER TORNI



CPC				CPC..MD	
	D1 mm	L1 mm	CM INT.	MD	€
CPCM1	12	80	1		
CPCM2	18	100	2	CPCM2-MD	59,30
CPCM3	24	125	3	CPCM3-MD	80,94
CPCM4	31	160	4	CPCM4-MD	98,72
CPCM5	44	200	5	CPCM5-MD	167,82
CPCM6	63	270	6		



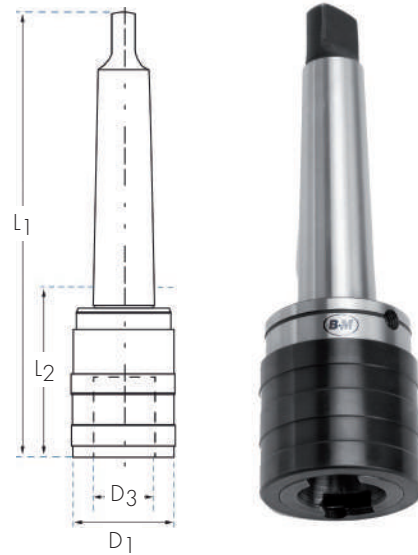
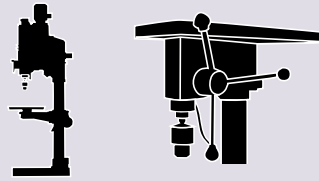
PGC					
	D1 mm	D2 mm	L1 mm	CM	€
PGCM1	34	18	120	1	148,56
PGCM2	50	21	148	2	165,69
PGCM3	60	24	185	3	222,75
PGCM4	63	30	220	4	264,00
PGCM5	75	44	260	5	381,56



PORTAMASCHI E TESTINE

DIN
228B

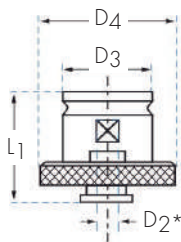
Ref. TC10



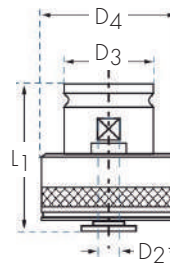
- Con compensazione longitudinale di compressione e trazione.
- Codolo Cono Morse

	D1 mm	D3 mm	L1 mm	L2 mm	CM	TC10
						€
TC10-19-CM2	36	19	122	47	2	316,35
TC10-19-CM3	36	19	141	47	3	404,19
TC10-31-CM3	53	31	165	71	3	520,11
TC10-31-CM4	53	31	189	72	4	579,55
TC10-48-CM4	78	48	222	105	4	876,75
TC10-48-CM5	78	48	255	106	5	936,20

PORTAMASCHI SENZA FRIZIONE



PORTAMASCHI CON FRIZIONE



	D2 mm	D3 mm	L1 mm	D4 mm	TC15
					€
TC15-19-035	3,5	19	28	30	42,36
TC15-19-040	4,0	19	28	30	42,36
TC15-19-045	4,5	19	28	30	42,36
TC15-19-060	6,0	19	28	30	42,36
TC15-19-070	7,0	19	28	30	42,36
TC15-19-080	8,0	19	28	30	42,36
TC15-19-090	9,0	19	28	30	42,36
TC15-19-100	10,0	19	28	30	42,36
TC15-31-070	7,0	31	46	48	59,48
TC15-31-080	8,0	31	46	48	59,48
TC15-31-090	9,0	31	46	48	59,48
TC15-31-100	10,0	31	46	48	59,48
TC15-31-110	11,0	31	46	48	59,48
TC15-31-120	12,0	31	46	48	59,48
TC15-31-140	14,0	31	46	48	59,48
TC15-31-160	16,0	31	46	48	59,48
TC15-48-110	11,0	48	69	70	157,58
TC15-48-120	12,0	48	69	70	157,58
TC15-48-140	14,0	48	69	70	157,58
TC15-48-160	16,0	48	69	70	157,58
TC15-48-180	18,0	48	69	70	157,58
TC15-48-200	20,0	48	69	70	157,58
TC15-48-220	22,0	48	69	70	157,58
TC15-48-250	25,0	48	69	70	157,58
TC15-48-280	28,0	48	69	70	157,58

	D2 mm	D3 mm	L1 mm	D4 mm	TC16
					€
TC16-19-035	3,5	19	46	32	101,66
TC16-19-040	4,0	19	46	32	101,66
TC16-19-045	4,5	19	46	32	101,66
TC16-19-060	6,0	19	46	32	101,66
TC16-19-070	7,0	19	46	32	101,66
TC16-19-080	8,0	19	46	32	101,66
TC16-19-090	9,0	19	46	32	101,66
TC16-19-100	10,0	19	46	32	101,66
TC16-31-070	7,0	31	69	50	128,77
TC16-31-080	8,0	31	69	50	128,77
TC16-31-090	9,0	31	69	50	128,77
TC16-31-100	10,0	31	69	50	128,77
TC16-31-110	11,0	31	69	50	128,77
TC16-31-120	12,0	31	69	50	128,77
TC16-31-140	14,0	31	69	50	128,77
TC16-31-160	16,0	31	69	50	128,77
TC16-48-110	11,0	48	100	70	285,10
TC16-48-120	12,0	48	100	70	285,10
TC16-48-140	14,0	48	100	70	285,10
TC16-48-160	16,0	48	100	70	285,10
TC16-48-180	18,0	48	100	70	285,10
TC16-48-200	20,0	48	100	70	285,10
TC16-48-220	22,0	48	100	70	285,10
TC16-48-250	25,0	48	100	70	285,10
TC16-48-280	28,0	48	100	70	285,10

* D2: Ø Codolo del maschio

* Per informazioni sul Ø codolo del maschio (D2) consultare la pagina 127.

MASCHI M/MF COMPATIBILI PER PORTAMASCHI CON / SENZA FRIZIONE

D2 mm.								
3,5	4	4,5	6	7	8	9	10	11
M3x0,50R	M3,5x0,60R	M4x0,50R	M4,5x0,50R	M9x1,00D	M8x1,25R	M9x1,25R	M10x1,50R	M13x0,75D
M3x0,60R	M3,5x0,75R	M4x0,70R	M4,5x0,75R	M9x1,25D	M11x0,75D	M12x0,75D		M13x1,00D
M5x0,50D		M4x0,75R	M5x0,50R	M10x0,50D	M11x1,00D	M12x1,00D		M13x1,25D
M5x0,75D		M4x0,80R	M5x0,75R	M10x0,75D	M11x1,25D	M12x1,25D		M13x1,50D
M5x0,80D		M6x0,50D	M5x0,80R	M10x1,00D	M11x1,50D	M12x1,50D		M13x1,75D
M5x0,90D		M6x0,75D	M5x0,90R	M10x1,25D		M12x1,75D		M14x0,75D
		M6x1,00D	M5x1,00R	M10x1,50D				M14x1,00D
			M5,5x0,90R					M14x1,25D
			M6x0,50R					M14x1,50D
			M6x0,75R					M14x2,00D
			M6x1,00R					
			M6x1,25R					
			M8x0,50D					
			M8x0,75D					
			M8x1,00D					
			M8x1,25D					
			M8x1,50D					

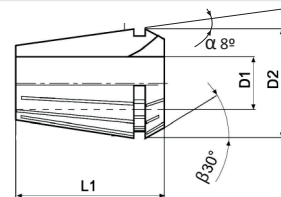
D2 mm.							
12	14	16	18	20	22	25	28
M15x1,00D	M18x1,00D	M20x1,00D	M22x1,00D	M27x1,00D	M30x1,00D	M33x1,00D	M34x1,50D
M15x1,25D	M18x1,25D	M20x1,25D	M22x1,25D	M27x1,50D	M30x1,50D	M33x1,50D	M34x2,00D
M15x1,50D	M18x1,50D	M20x1,50D	M22x1,50D	M27x2,00D	M30x2,00D	M33x2,00D	M35x1,50D
M15x2,00D	M18x2,00D	M20x2,00D	M22x2,00D	M27x3,00D	M30x3,00D	M33x3,50D	M35x2,00D
M16x1,00D	M18x2,50D	M20x2,50D	M22x2,50D	M28x1,00D	M30x3,50D		M36x1,50D
M16x1,25D	M19x1,00D	M21x1,00D	M23x1,00D	M28x1,50D	M32x1,00D		M36x2,00D
M16x1,50D	M19x1,25D	M21x1,25D	M23x1,50D	M28x2,00D	M32x1,50D		M36x3,00D
M16x2,00D	M19x1,50D	M21x1,50D	M24x1,00D		M32x2,00D		M36x4,00D
M17x1,00D	M19x2,00D		M24x1,25D				M38x1,50D
M17x1,25D			M24x1,50D				M38x2,00D
M17x1,50D			M24x2,00D				
			M24x3,00D				
			M25x1,00D				
			M25x1,25D				
			M25x1,50D				
			M25x2,00D				
			M26x1,00D				
			M26x1,50D				
			M26x2,00D				

* D2: Codolo del maschio
 * La tabella si riferisce a codoli a norma DIN:
 * R = Rinforzato = DIN371
 * D = Ridotto = DIN374 / DIN376

PINZE DI PRECISIONE

TIPO
ERDIN
6499-B $\alpha: 8^\circ \beta: 30^\circ$

- Pinze adatte ad utensili a codolo cilindrico liscio.



D2: 8,5 L1: 13,5



D2: 11,5 L1: 18



ER8

EXC 0,01	INDUSTRIALE		EXC 0,005	ALTA PRECISIONE	
	Capacità D1	€		Capacità D1	€
ER8-1	0,5-1,0	51,97	ER8-1MICRO	0,5-1,0	-
ER8-1,5	1,0-1,5	51,97	ER8-1,5MICRO	1,0-1,5	-
ER8-2	1,5-2,0	44,55	ER8-2MICRO	1,5-2,0	-
ER8-2,5	2,0-2,5	44,55	ER8-2,5MICRO	2,0-2,5	-
ER8-3	2,5-3,0	39,11	ER8-3MICRO	2,5-3,0	-
ER8-3,5	3,0-3,5	39,11	ER8-3,5MICRO	3,0-3,5	-
ER8-4	3,5-4,0	39,11	ER8-4MICRO	3,5-4,0	-
ER8-4,5	4,0-4,5	39,11	ER8-4,5MICRO	4,0-4,5	-
ER8-5	4,5-5,0	39,11	ER8-5MICRO	4,5-5,0	-

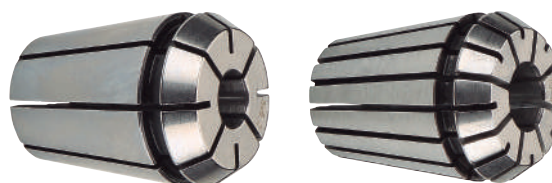
ER11

EXC 0,01	INDUSTRIALE		EXC 0,005	ALTA PRECISIONE	
	Capacità D1	€		Capacità D1	€
ER11-1	0,5-1,0	49,50	ER11-1MICRO	0,5-1,0	-
ER11-1,5	1,0-1,5	49,50	ER11-1,5MICRO	1,0-1,5	-
ER11-2	1,5-2,0	42,44	ER11-2MICRO	1,5-2,0	-
ER11-2,5	2,0-2,5	42,44	ER11-2,5MICRO	2,0-2,5	-
ER11-3	2,5-3,0	37,26	ER11-3MICRO	2,5-3,0	-
ER11-3,5	3,0-3,5	37,26	ER11-3,5MICRO	3,0-3,5	53,33
ER11-4	3,5-4,0	37,26	ER11-4MICRO	3,5-4,0	53,33
ER11-4,5	4,0-4,5	37,26	ER11-4,5MICRO	4,0-4,5	53,33
ER11-5	4,5-5,0	37,26	ER11-5MICRO	4,5-5,0	53,33
ER11-5,5	5,0-5,5	37,26	ER11-5,5MICRO	5,0-5,5	53,33
ER11-6	5,5-6,0	37,26	ER11-6MICRO	5,5-6,0	53,33
ER11-6,5	6,0-6,6	37,26	ER11-6,5MICRO	6,0-6,6	53,33
ER11-7	6,5-7,0	37,26	ER11-7MICRO	6,5-7,0	53,33

D2: 17 L1: 27,5



D2: 26 L1: 34



ER16

EXC 0,01	INDUSTRIALE		EXC 0,005	ALTA PRECISIONE	
	Capacità D1	€		Capacità D1	€
ER16-1	0,5-1,0	44,36	ER16-1MICRO	0,5-1,0	-
ER16-2	1,0-2,0	39,93	ER16-2MICRO	1,0-2,0	-
ER16-3	2,0-3,0	35,93	ER16-3MICRO	2,0-3,0	-
ER16-4	3,0-4,0	35,93	ER16-4MICRO	3,0-4,0	47,49
ER16-5	4,0-5,0	35,93	ER16-5MICRO	4,0-5,0	47,49
ER16-6	5,0-6,0	35,93	ER16-6MICRO	5,0-6,0	47,49
ER16-7	6,0-7,0	35,93	ER16-7MICRO	6,0-7,0	47,49
ER16-8	7,0-8,0	35,93	ER16-8MICRO	7,0-8,0	47,49
ER16-9	8,0-9,0	35,93	ER16-9MICRO	8,0-9,0	47,49
ER16-10	9,0-10,0	35,93	ER16-10MICRO	9,0-10,0	47,49

ER25

EXC 0,01	INDUSTRIALE		EXC 0,005	ALTA PRECISIONE	
	Capacità D1	€		Capacità D1	€
ER25-2	1,0-2,0	41,14	ER25-2MICRO	1,0-2,0	-
ER25-3	2,0-3,0	41,14	ER25-3MICRO	2,0-3,0	-
ER25-4	3,0-4,0	41,14	ER25-4MICRO	3,0-4,0	51,14
ER25-5	4,0-5,0	41,14	ER25-5MICRO	4,0-5,0	51,14
ER25-6	5,0-6,0	41,14	ER25-6MICRO	5,0-6,0	51,14
ER25-7	6,0-7,0	41,14	ER25-7MICRO	6,0-7,0	51,14
ER25-8	7,0-8,0	41,14	ER25-8MICRO	7,0-8,0	51,14
ER25-9	8,0-9,0	41,14	ER25-9MICRO	8,0-9,0	51,14
ER25-10	9,0-10,0	41,14	ER25-10MICRO	9,0-10,0	51,14
ER25-11	10,0-11,0	41,14	ER25-11MICRO	10,0-11,0	51,14
ER25-12	11,0-12,0	41,14	ER25-12MICRO	11,0-12,0	51,14
ER25-13	12,0-13,0	41,14	ER25-13MICRO	12,0-13,0	51,14
ER25-14	13,0-14,0	41,14	ER25-14MICRO	13,0-14,0	51,14
ER25-15	14,0-15,0	41,14	ER25-15MICRO	14,0-15,0	51,14
ER25-16	15,0-16,0	41,14	ER25-16MICRO	15,0-16,0	51,14

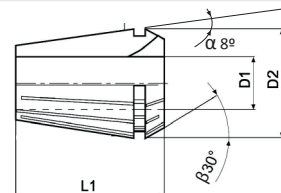
PINZE DI PRECISIONE

**TIPO
ER**

**DIN
6499-B**

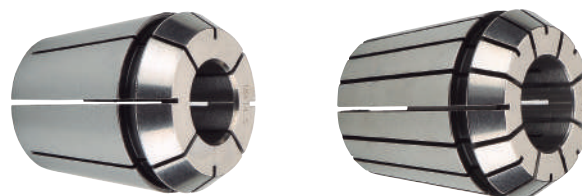
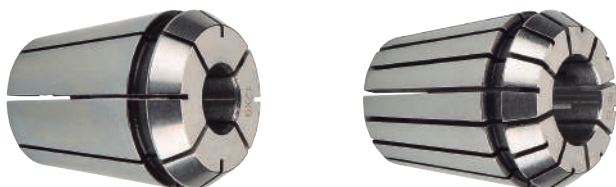
$\alpha: 8^\circ \beta: 30^\circ$

• Pinze adatte ad utensili a codolo cilindrico liscio.



D2: 33 L1: 40

D2: 41 L1: 46



ER32

EXC 0,01	INDUSTRIALE		EXC 0,005	ALTA PRECISIONE	
	Capacità D1	€		Capacità D1	€
ER32-3	2,0-3,0	39,10	ER32-3MICRO	2,0-3,0	-
ER32-4	3,0-4,0	39,10	ER32-4MICRO	3,0-4,0	53,41
ER32-5	4,0-5,0	39,10	ER32-5MICRO	4,0-5,0	53,41
ER32-6	5,0-6,0	39,10	ER32-6MICRO	5,0-6,0	53,41
ER32-7	6,0-7,0	39,10	ER32-7MICRO	6,0-7,0	53,41
ER32-8	7,0-8,0	39,10	ER32-8MICRO	7,0-8,0	53,41
ER32-9	8,0-9,0	39,10	ER32-9MICRO	8,0-9,0	53,41
ER32-10	9,0-10,0	39,10	ER32-10MICRO	9,0-10,0	53,41
ER32-11	10,0-11,0	39,10	ER32-11MICRO	10,0-11,0	53,41
ER32-12	11,0-12,0	39,10	ER32-12MICRO	11,0-12,0	53,41
ER32-13	12,0-13,0	39,10	ER32-13MICRO	12,0-13,0	53,41
ER32-14	13,0-14,0	39,10	ER32-14MICRO	13,0-14,0	53,41
ER32-15	14,0-15,0	39,10	ER32-15MICRO	14,0-15,0	53,41
ER32-16	15,0-16,0	39,10	ER32-16MICRO	15,0-16,0	53,41
ER32-17	16,0-17,0	39,10	ER32-17MICRO	16,0-17,0	53,41
ER32-18	17,0-18,0	39,10	ER32-18MICRO	17,0-18,0	53,41
ER32-19	18,0-19,0	39,10	ER32-19MICRO	18,0-19,0	53,41
ER32-20	19,0-20,0	39,10	ER32-20MICRO	19,0-20,0	53,41

ER40

EXC 0,01	INDUSTRIALE		EXC 0,005	ALTA PRECISIONE	
	Capacità D1	€		Capacità D1	€
ER40-3	2,0-3,0	49,69	ER40-3MICRO	2,0-3,0	-
ER40-4	3,0-4,0	49,69	ER40-4MICRO	3,0-4,0	63,55
ER40-5	4,0-5,0	49,69	ER40-5MICRO	4,0-5,0	63,55
ER40-6	5,0-6,0	49,69	ER40-6MICRO	5,0-6,0	63,55
ER40-7	6,0-7,0	49,69	ER40-7MICRO	6,0-7,0	63,55
ER40-8	7,0-8,0	49,69	ER40-8MICRO	7,0-8,0	63,55
ER40-9	8,0-9,0	49,69	ER40-9MICRO	8,0-9,0	63,55
ER40-10	9,0-10,0	49,69	ER40-10MICRO	9,0-10,0	63,55
ER40-11	10,0-11,0	49,69	ER40-11MICRO	10,0-11,0	63,55
ER40-12	11,0-12,0	49,69	ER40-12MICRO	11,0-12,0	63,55
ER40-13	12,0-13,0	49,69	ER40-13MICRO	12,0-13,0	63,55
ER40-14	13,0-14,0	49,69	ER40-14MICRO	13,0-14,0	63,55
ER40-15	14,0-15,0	49,69	ER40-15MICRO	14,0-15,0	63,55
ER40-16	15,0-16,0	49,69	ER40-16MICRO	15,0-16,0	63,55
ER40-17	16,0-17,0	49,69	ER40-17MICRO	16,0-17,0	63,55
ER40-18	17,0-18,0	49,69	ER40-18MICRO	17,0-18,0	63,55
ER40-19	18,0-19,0	49,69	ER40-19MICRO	18,0-19,0	63,55
ER40-20	19,0-20,0	49,69	ER40-20MICRO	19,0-20,0	63,55
ER40-21	20,0-21,0	49,69	ER40-21MICRO	20,0-21,0	63,55
ER40-22	21,0-22,0	49,69	ER40-22MICRO	21,0-22,0	63,55
ER40-23	22,0-23,0	49,69	ER40-23MICRO	22,0-23,0	63,55
ER40-24	23,0-24,0	49,69	ER40-24MICRO	23,0-24,0	63,55
ER40-25	24,0-25,0	49,69	ER40-25MICRO	24,0-25,0	63,55
ER40-26	25,0-26,0	49,69	ER40-26MICRO	25,0-26,0	63,55

AFFILATRICE PROFESSIONALE CERTIFICATA BLUE-MASTER

Mandriini e accessori

Rosa



*Include valigetta e mola di scorta





Ref. AFB10



"Dimentica i problemi elettrici delle altre affilatrici"
Include dispositivo anti-cortocircuiti

AFB10

CAPACITÀ AFFILATURA:	Ø 3-13
ANGOLO DI TAGLIO:	118°
TIPI DI AFFILATURE:	 
RIAFFILA PUNTE:	HSS HSSCo MD TiN PMD

283,04 €

AFFILA PUNTE IN 4 SEMPLICI PASSI:



1
Posiziona e regola
la punta nel mandrino



2
Affila la punta



3
Controlla l'affilatura convenzionale



4
Affilatura secondaria a croce (Split Point)

MANDRINO DI RICAMBIO



PAFB10
33,25 €

MOLA IN DIAMANTE GRANA STANDARD



MAFB10
34,82 €

SUPPORTO PER AFB10



SOPAFB10
31,16 €

AFFILATRICI PER PUNTE DRILL DOCTOR

750X
Alta precisione



					AFB1
CAPACITÀ AFFILATURA:	Ø 2,5-19				
ANGOLO DI TAGLIO:	118°	135°			
TIPI DI AFFILATURE:					
RIAFFILA PUNTE:	HSS	HSSCo	MD	TiN	PMD
*Include valigetta					520,19 €

500X
Affilatura professionale



					AFB2
CAPACITÀ AFFILATURA:	Ø 2,5-13				
ANGOLO DI TAGLIO:	118°	135°			
TIPI DI AFFILATURE:					
RIAFFILA PUNTE:	HSS	HSSCo	MD	TiN	PMD
					436,95 €

XP
Pratico ed economico



					AFB3
CAPACITÀ AFFILATURA:	Ø 2,5-13				
ANGOLO DI TAGLIO:	118°				
TIPI DI AFFILATURE:					
RIAFFILA PUNTE:	HSS	HSSCo	MD	TiN	PMD
					210,58 €

ACCESSORI PER AFFILTRICI

MANDRINI PER AFFILTRICI



Per 750X

AFB1PB

78,71 €



Per punta a sinistra

AFB2PBI

78,74 €

MOLA GRANA GROSSA PER AFFILTRICI 750X, 500X



AFBT

75,33 €

MOLA GRANA STANDARD PER AFFILTRICI 750X, 500X



AFBR

75,33 €

VITI PER AFFILTRICI 750X Y 500X



AFBTLL

8,64 €

SUPPORTO PER AFB10



SOPAFB10

31,16 €